



# Fiber Switch OS12/4: Full Reset

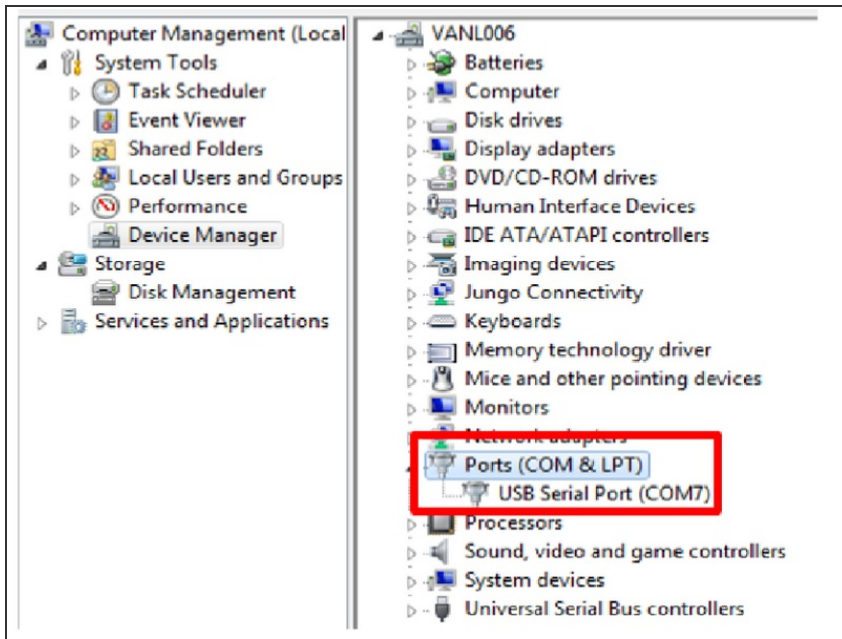
Written By: Ryan Russo



## INTRODUCTION

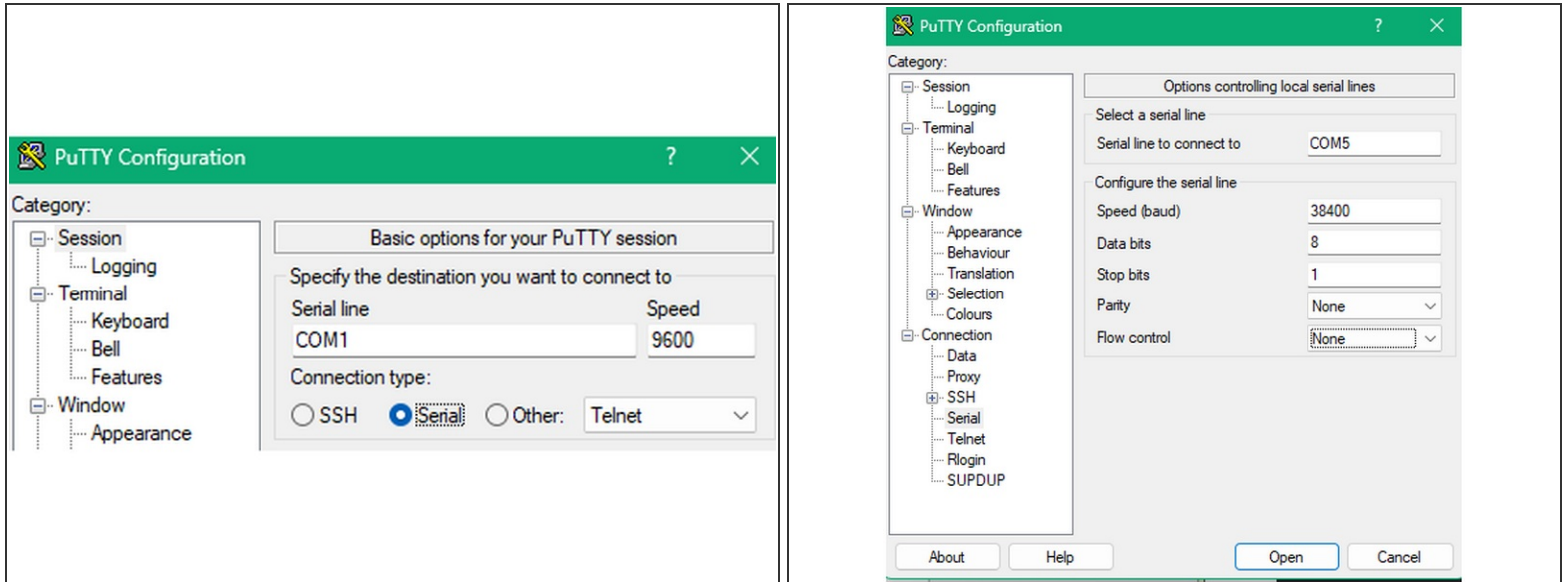
If your switch is not able to be accessed from the default IP, it may need to be re-initialized. This will return the switch to factory defaults with the CL default IP of *192.168.1.6/16*. This guide is focused around the Windows OS and requires a USB Type B cable to access the Console port on the front of the switch.

## Step 1 — Set up for Serial Port access



- Power the switch on, then connect the USB Type B cable to the Console port.
- Open the Device Manager in Windows. Select the **Ports (COM & LPT)** and locate the *USB Serial Port (COM<sub>X</sub>)*
  - ☑ Make a note of the COM<sub>X</sub> port number. This will be needed to access the Serial connection using PuTTY in the next step. For example; COM7.

## Step 2 — Open PuTTY



- Download and install PuTTY. Once installation is completed, open PuTTY.
- In the Session header on the opening screen, ensure you select "**Serial**" under the Connection Type.
- Under the **Connection** header, select **Serial**.
- Ensure you have the correct COM port from the previous step. The Serial Line settings should be:
  - 0.1 Speed (Baud): **38400**
  - 0.2 Data Bits: **8**
  - 0.3 Stop Bits: **1**
  - 0.4 Parity and Flow Control: **None**

### Step 3 — Initialize and Reset IP

```
<HP>ipsetup ip-address 192.168.1.6 16 default-gateway
<HP>summary
Select menu option:                Summary
IP Method:                         Manual
IP address:                        192.168.1.6
Subnet mask:                       255.255.0.0
Default gateway:

IPv6 Method:
IPv6 link-local address:
IPv6 subnet mask length:
IPv6 global address:
IPv6 subnet mask length:
IPv6 default gateway:
```

#### IP Summary

- Open the connection and PuTTY will present the Command Line Interface. It will prompt for login information. Username = *admin*, password should be left empty.
- At the **<HP>** prompt, type “*initialize*” then press **[Enter]**. At the next prompt, type “y” and press **[Enter]**. The switch will reset.
- Once back at the command prompt, type the following command: “*ipsetup ip-address 192.168.1.6 16 default-gateway 192.168.1.1*”, then press **[Enter]**. Ensure the settings have saved by using the “*Summary*” command.
- This will set the IP back to the default, and the Switch will now be accessible from the web interface at the default IP of *192.168.1.6/16*.

## Step 4 — Log in to the Web Interface



- The web portal will be accessible by visiting `192.168.1.6` from a web browser.
- ⓘ *Due to the age of the HP 19xx series switch, we only recommend using [Firefox](#) to access the portal. Chrome, Edge, Opera, and Safari have all resulted in connection failures in testing, where Firefox has not.*
- Once you arrive at the web interface, you will be prompted for the User credentials. Just as before, the User is "admin", the password should be left empty, and the Verify Code should be entered to match the characters shown to the right of the input box.
- Once you are successfully logged in, the interface will be fully accessible. Refer to the [Setup Guide](#) for setup options/examples.
- ⚠ **Remember to save configuration with each change in order to have your settings persist a reset or power loss!**